

Measuring Things - Distance

- How wide is this classroom?
- How far is it from Earth to the Moon?

Measuring Things - Time

- How old is Boston University?
- How old is the solar system?

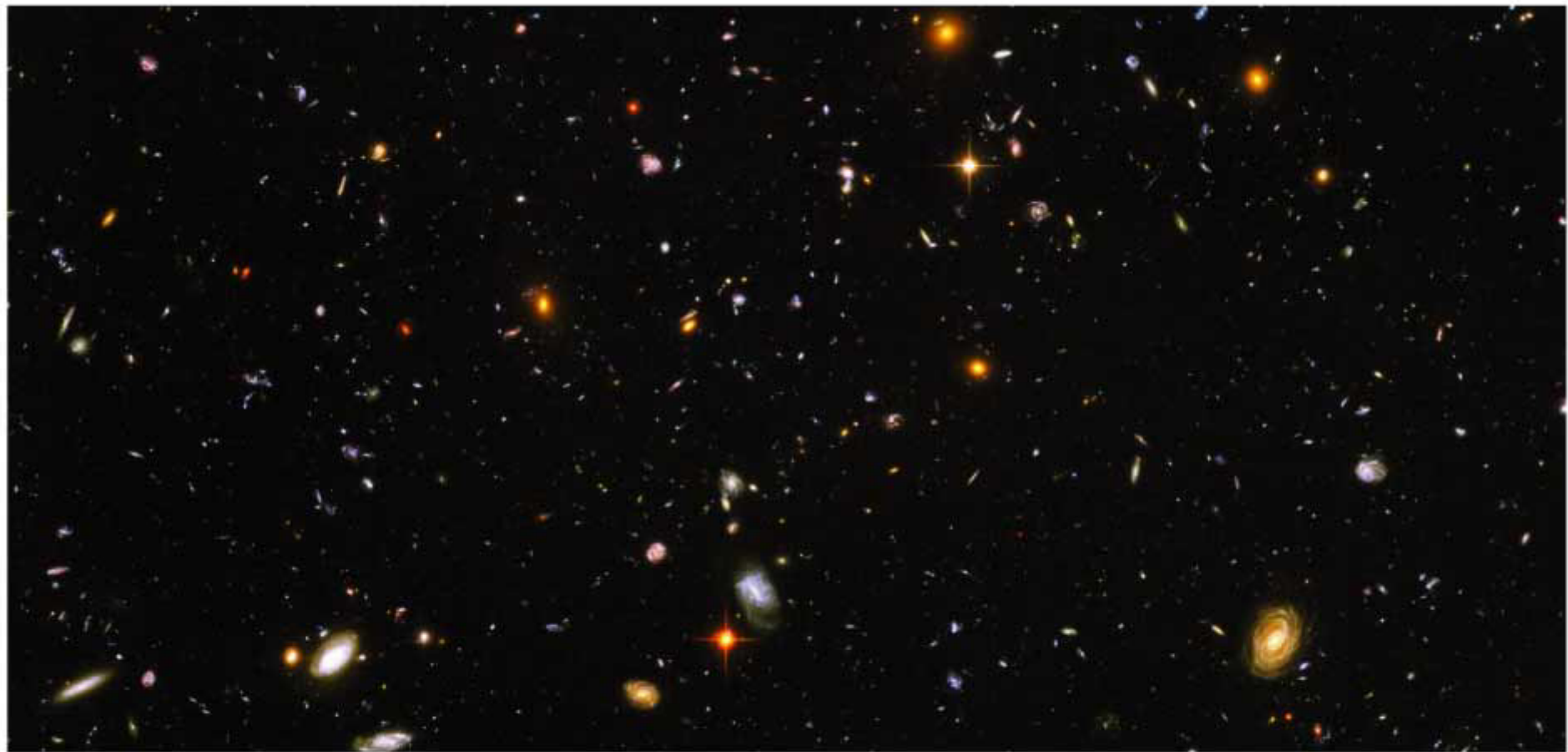
Measuring Things - Mass

- How heavy is a typical car?
- How heavy is Earth?

A Tour of the Solar System

Enjoy the pretty pictures

Don't try to remember all the
details today



Universe

approx. size: 10^{21} km

Local Supercluster

approx. size: 3×10^{18} km

Local Group

approx. size: 10^{18} km

Milky Way Galaxy

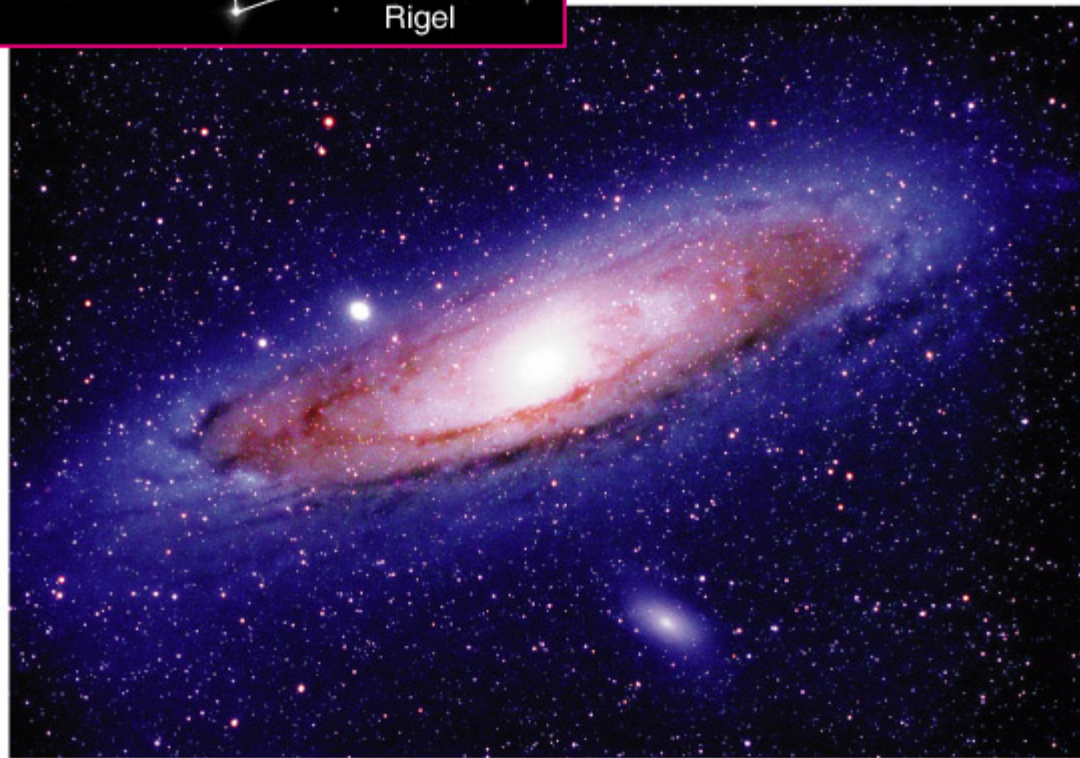
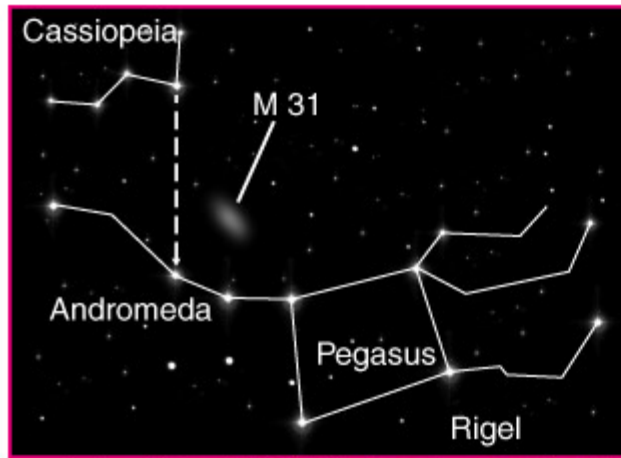
Earth

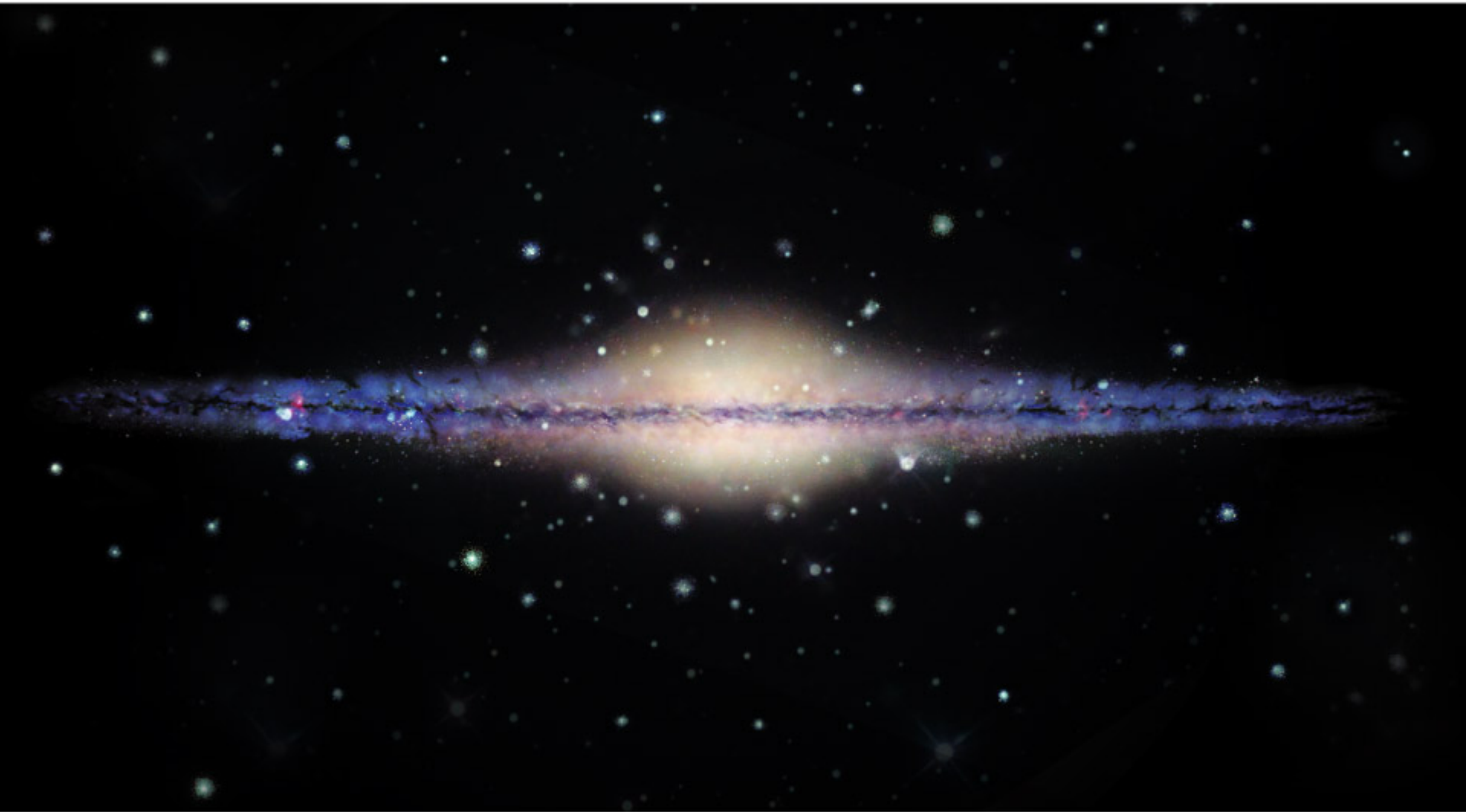
Solar System

(not to scale)

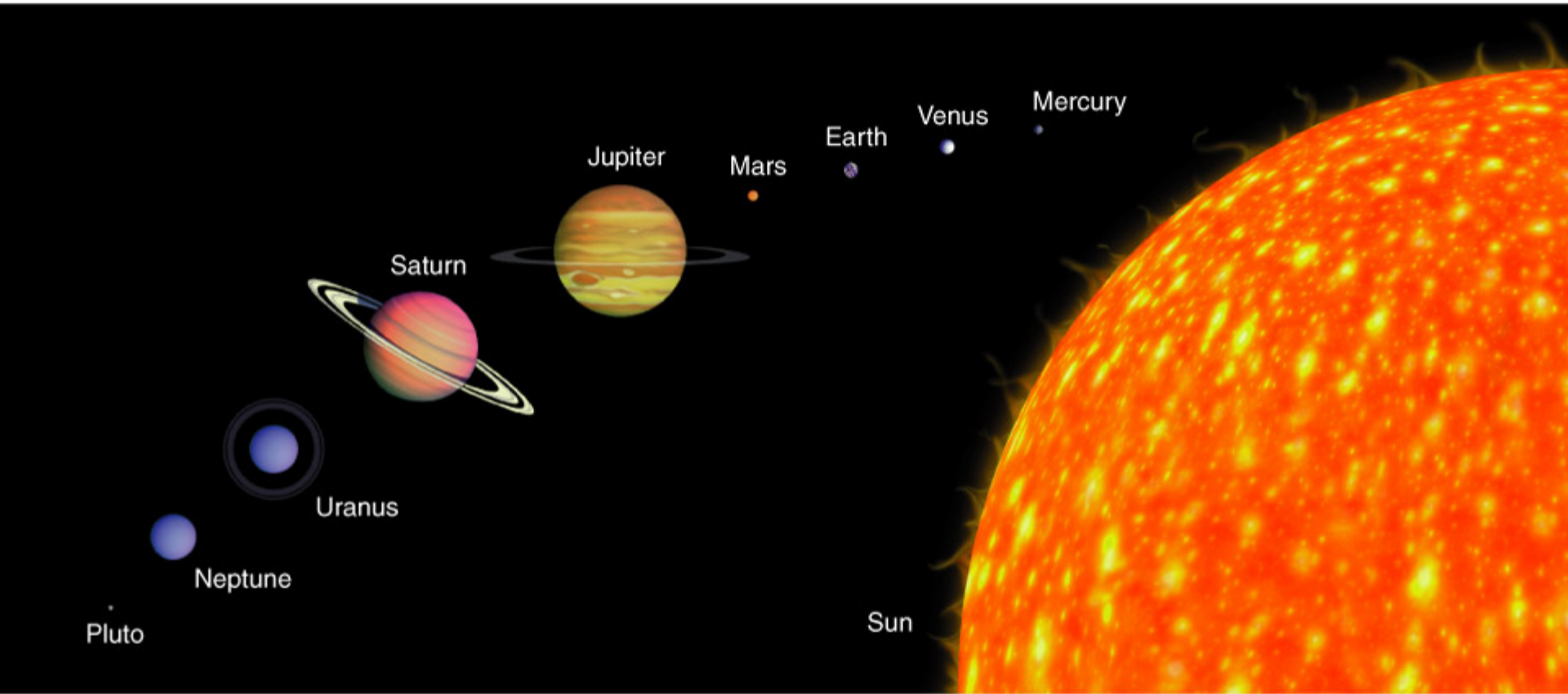
approx. size: 10^{10} km

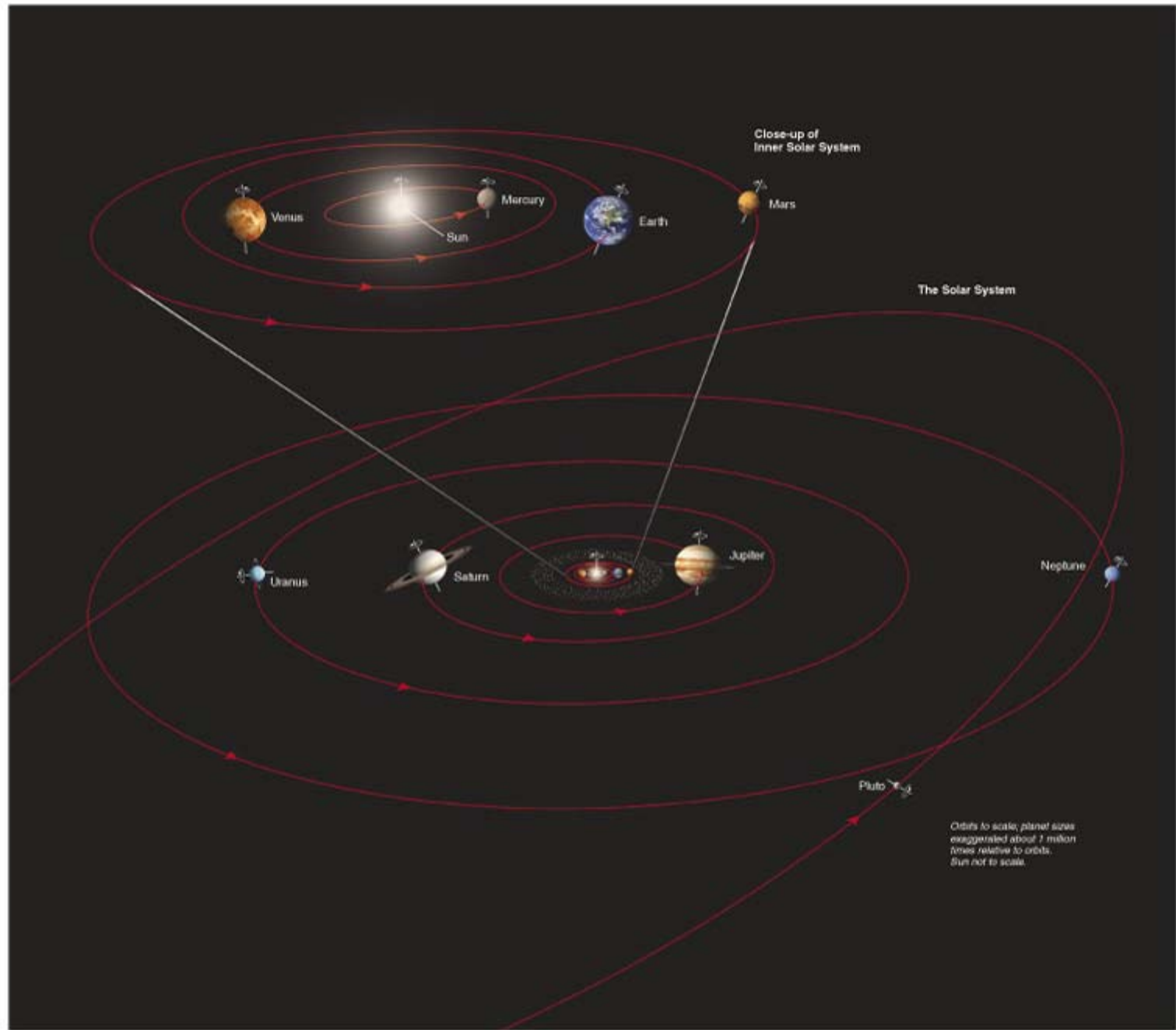
approx. size: 10^4 km

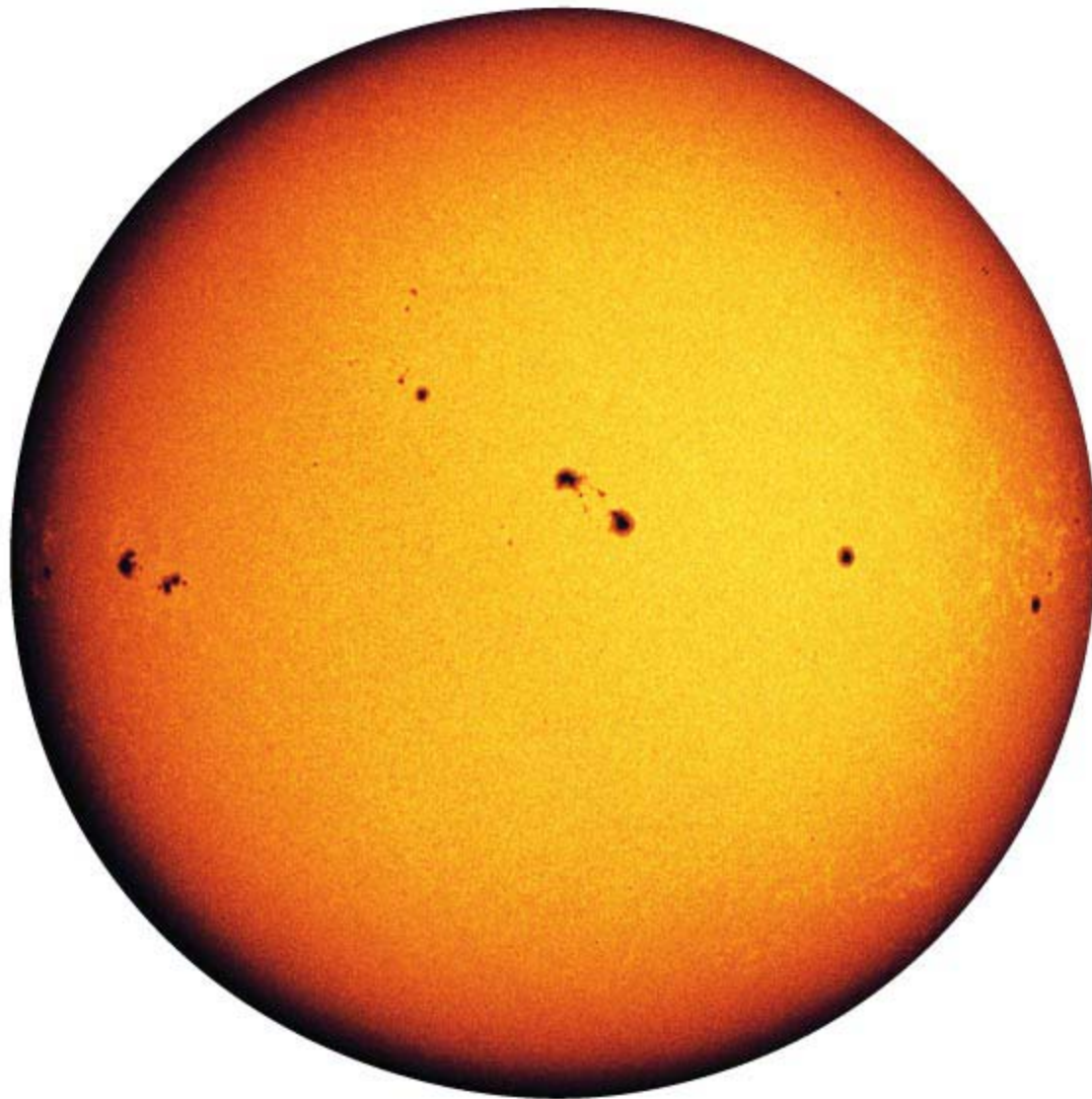






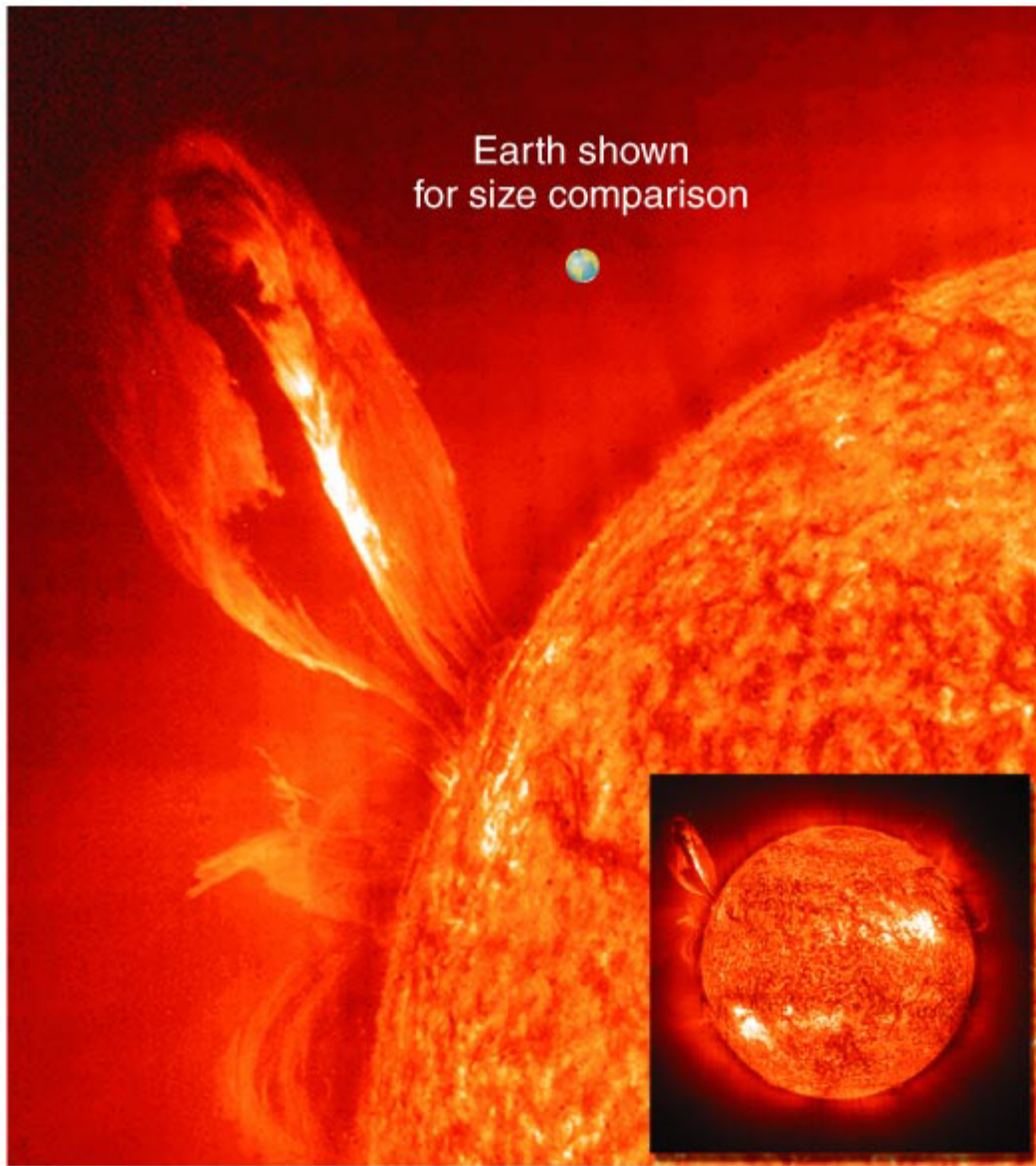


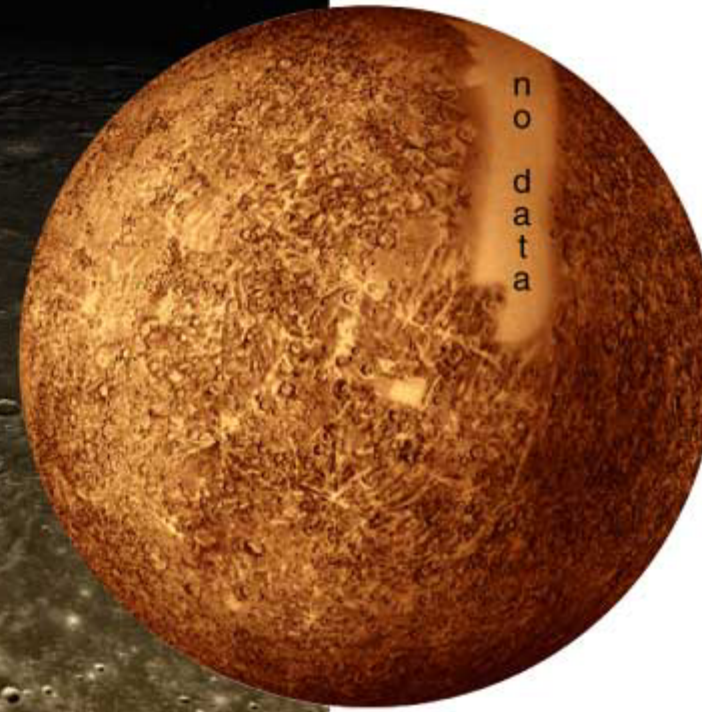
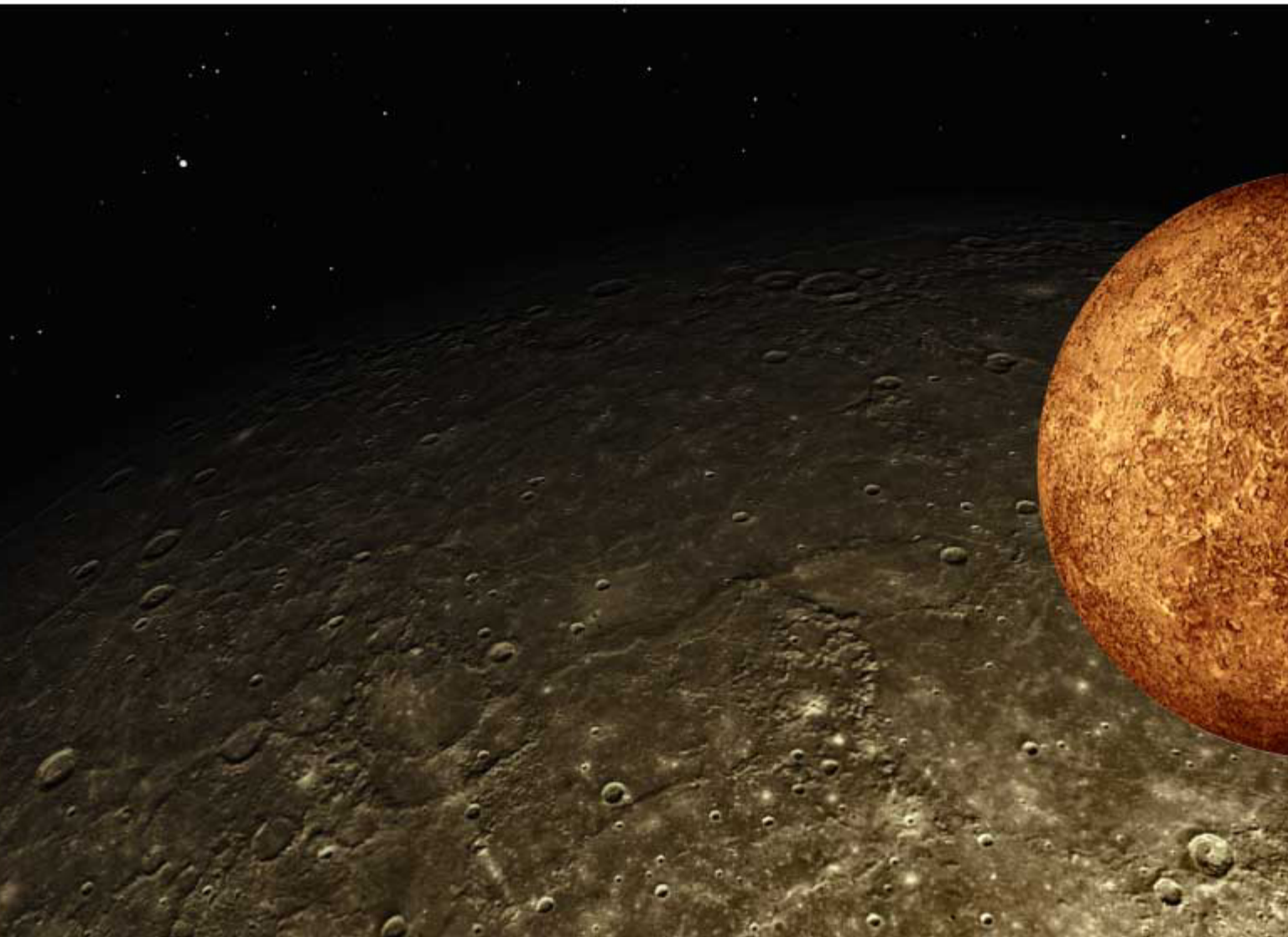




© 2006 Pearson Education, Inc., publishing as Addison Wesley

Earth shown
for size comparison

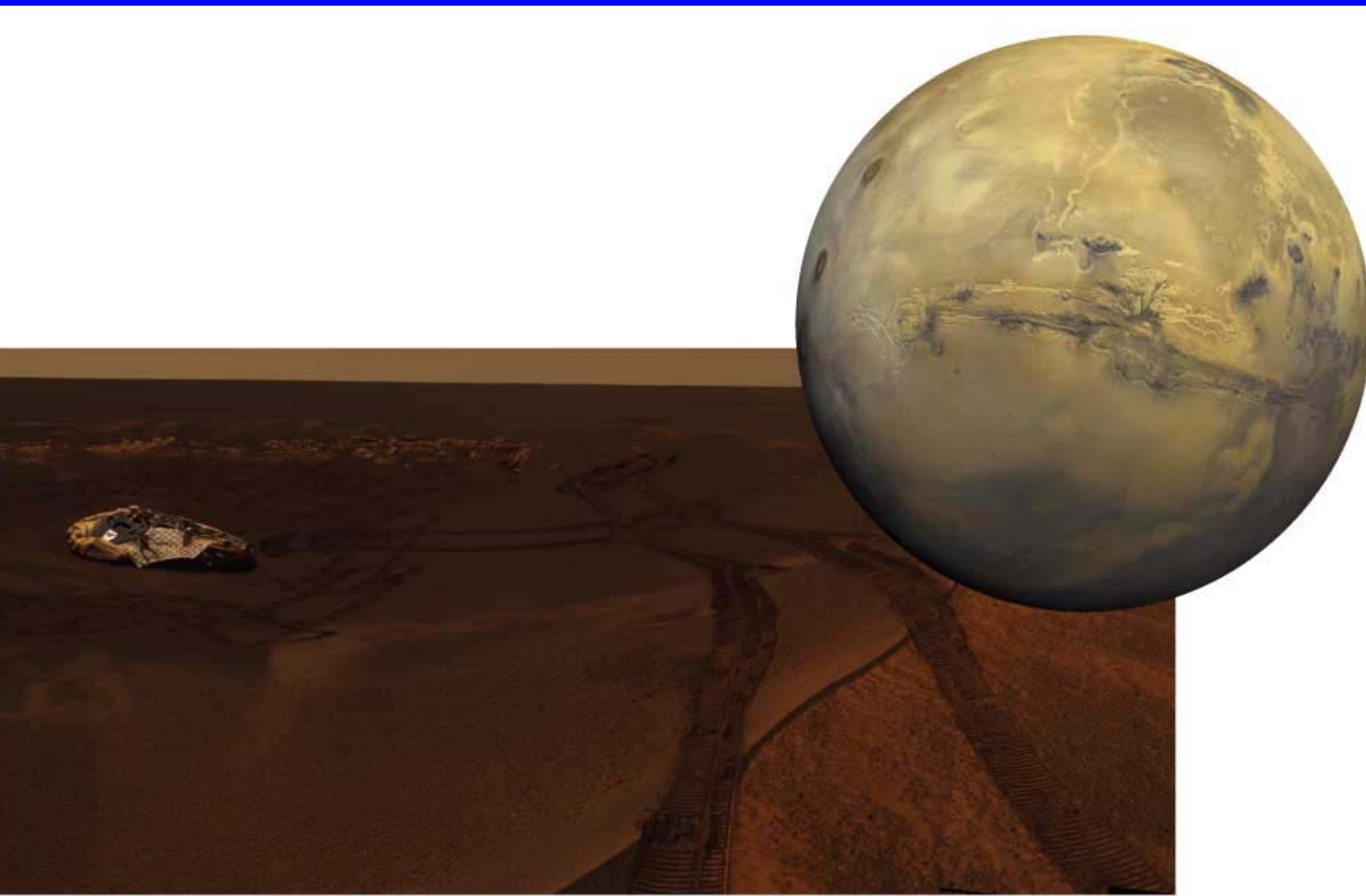


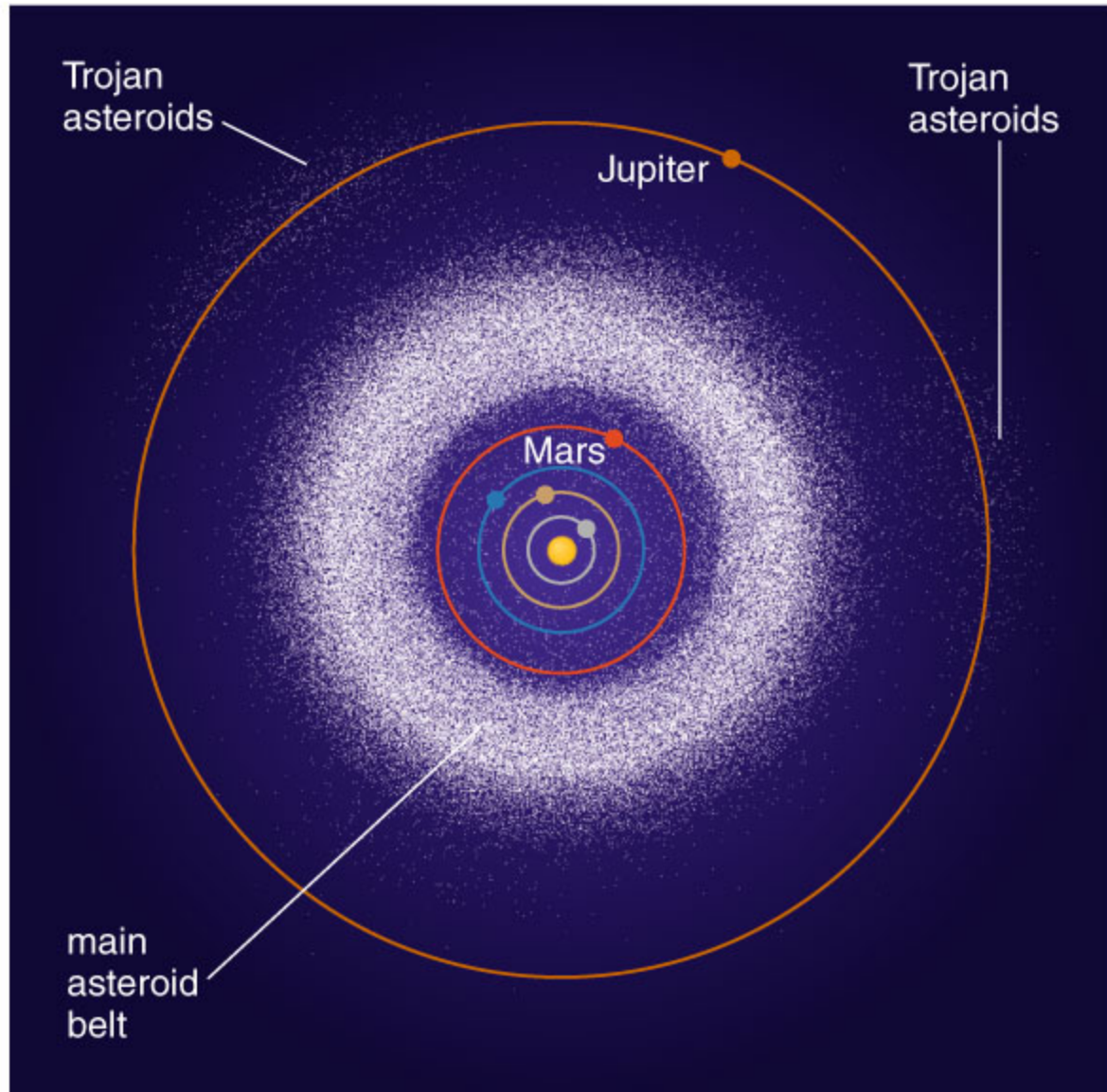


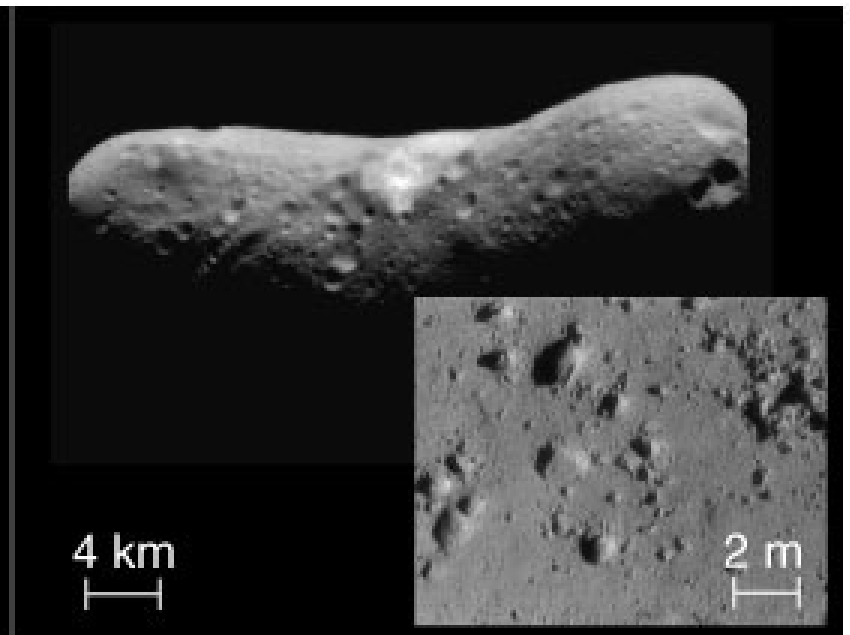
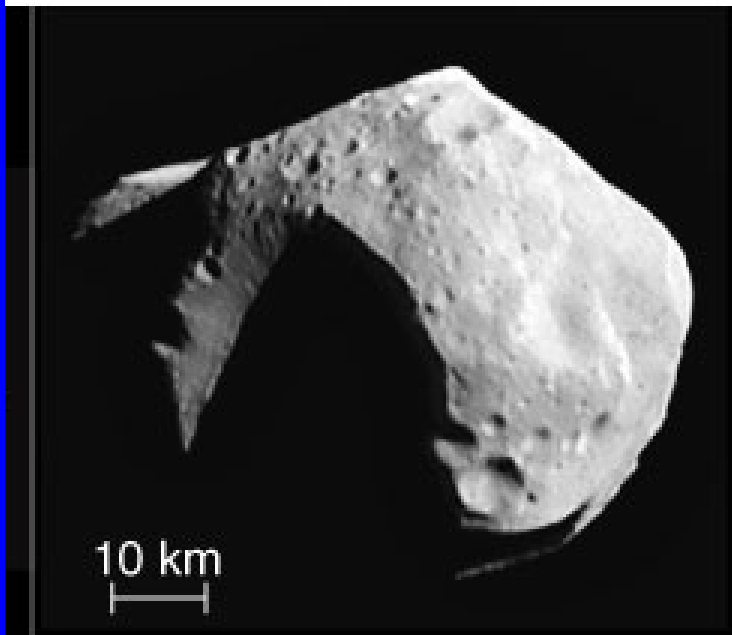
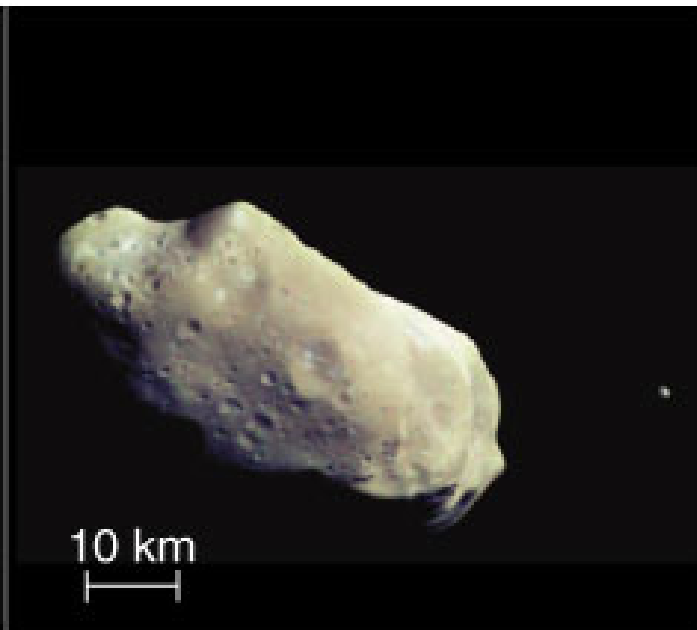
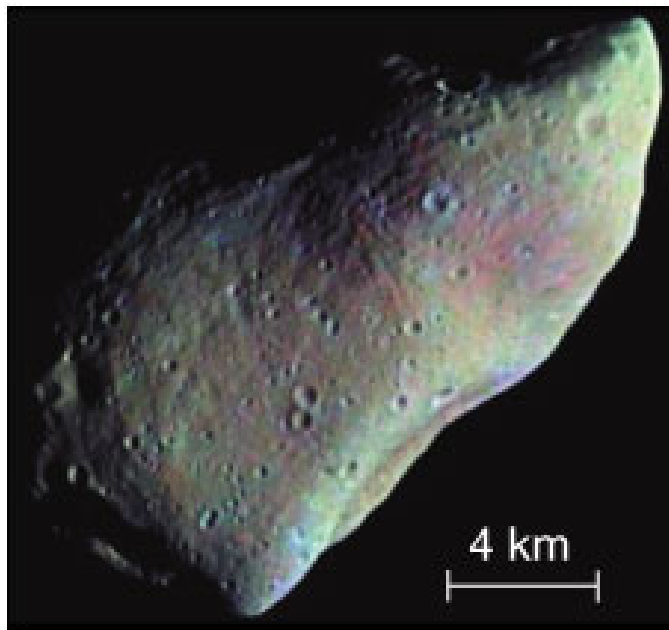


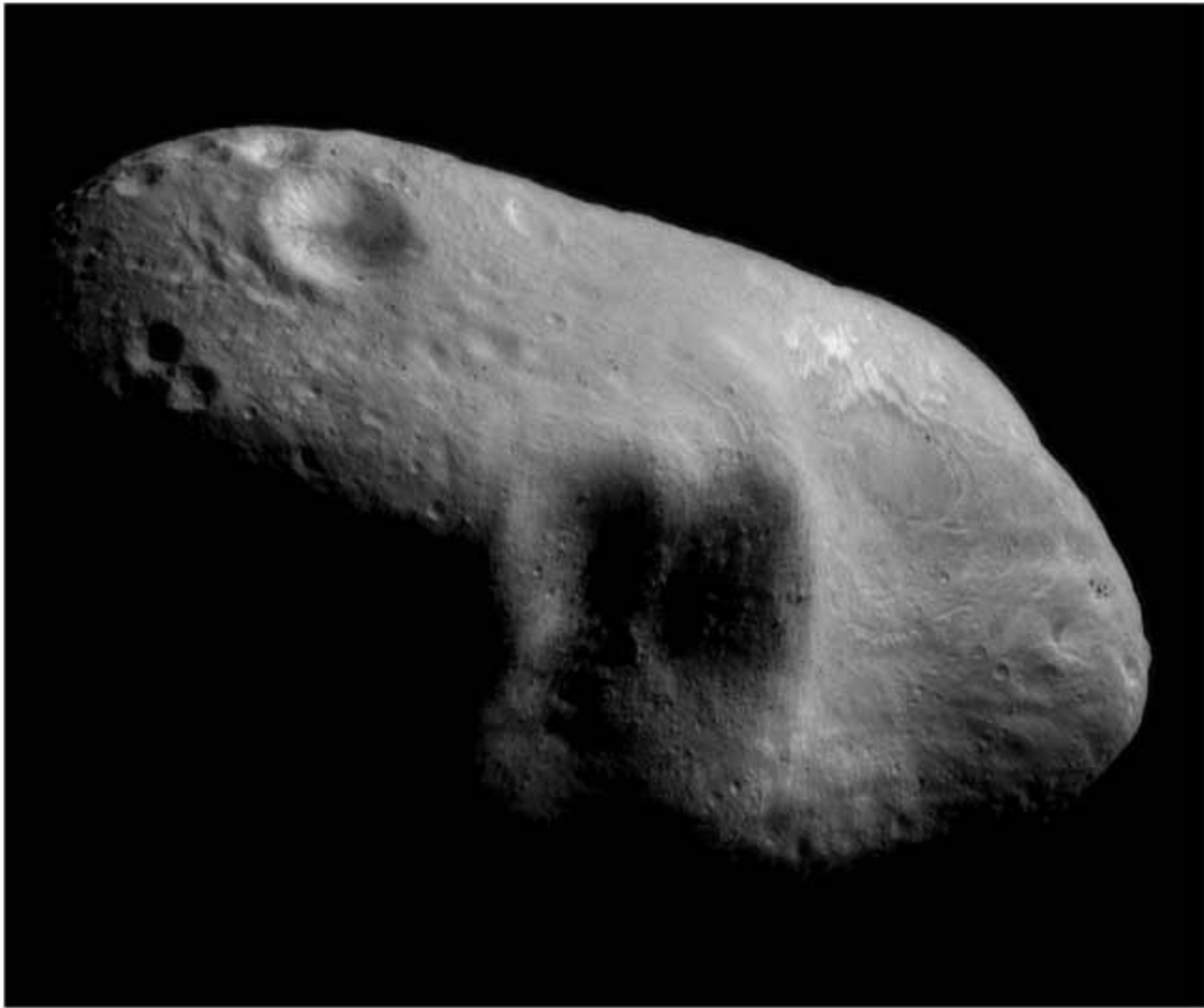


© 2006 Pearson Education, Inc., publishing as Addison Wesley

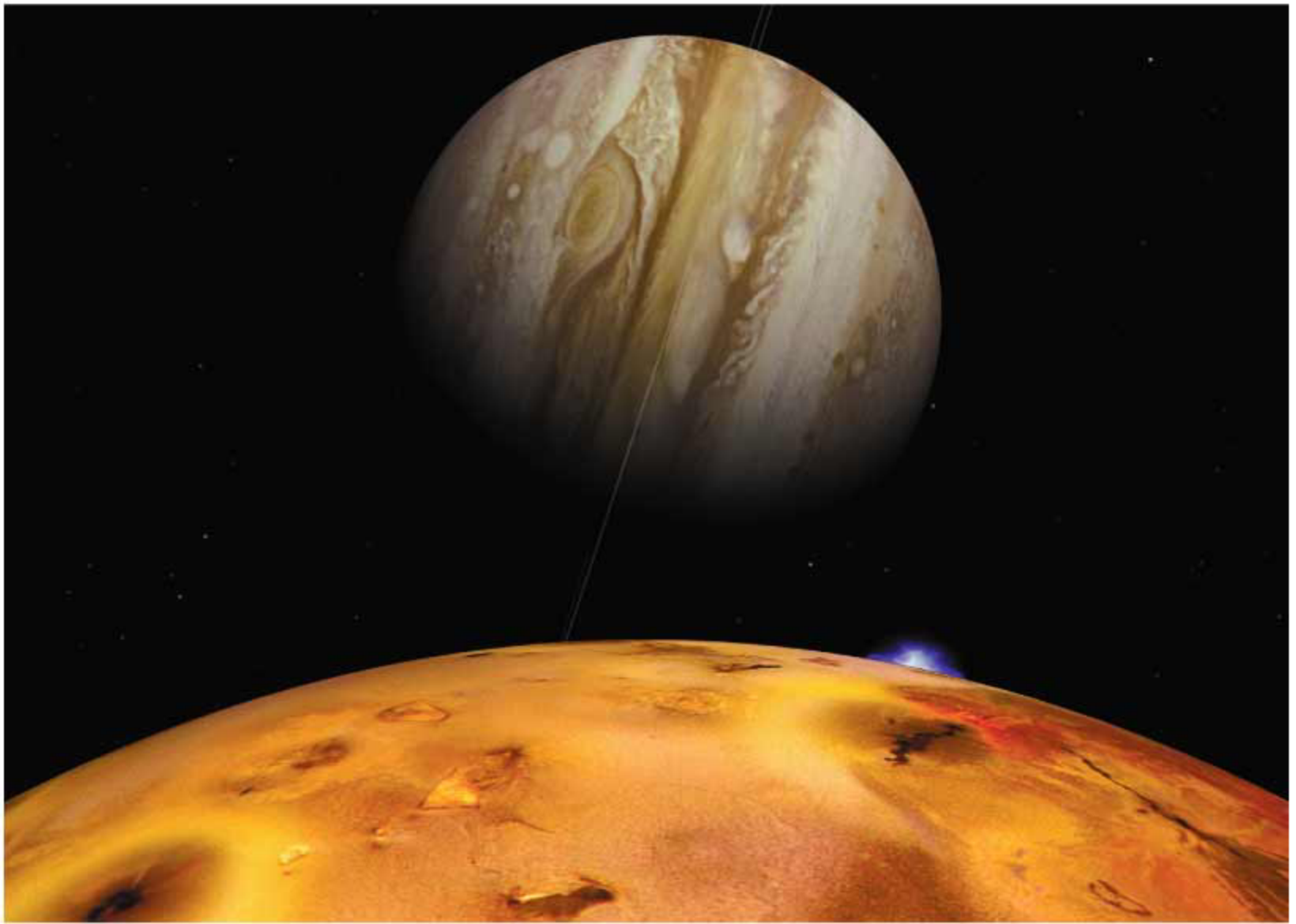




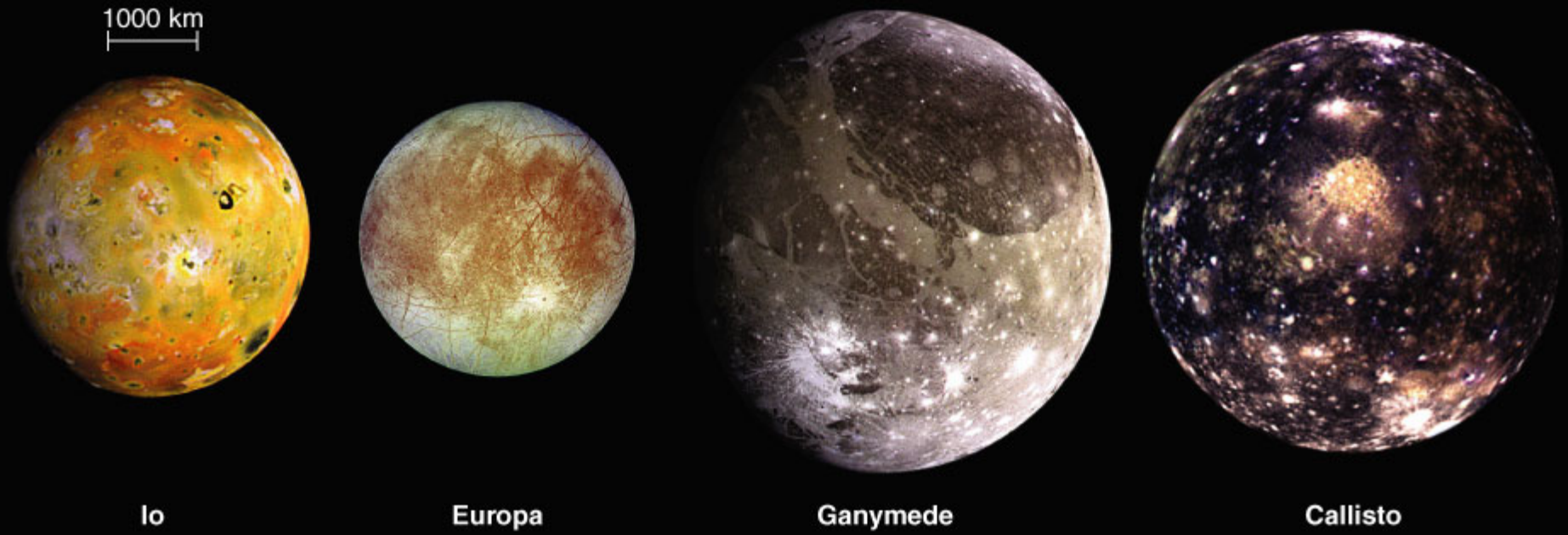




© 2006 Pearson Education, Inc., publishing as Addison Wesley



© 2006 Pearson Education, Inc., publishing as Addison Wesley



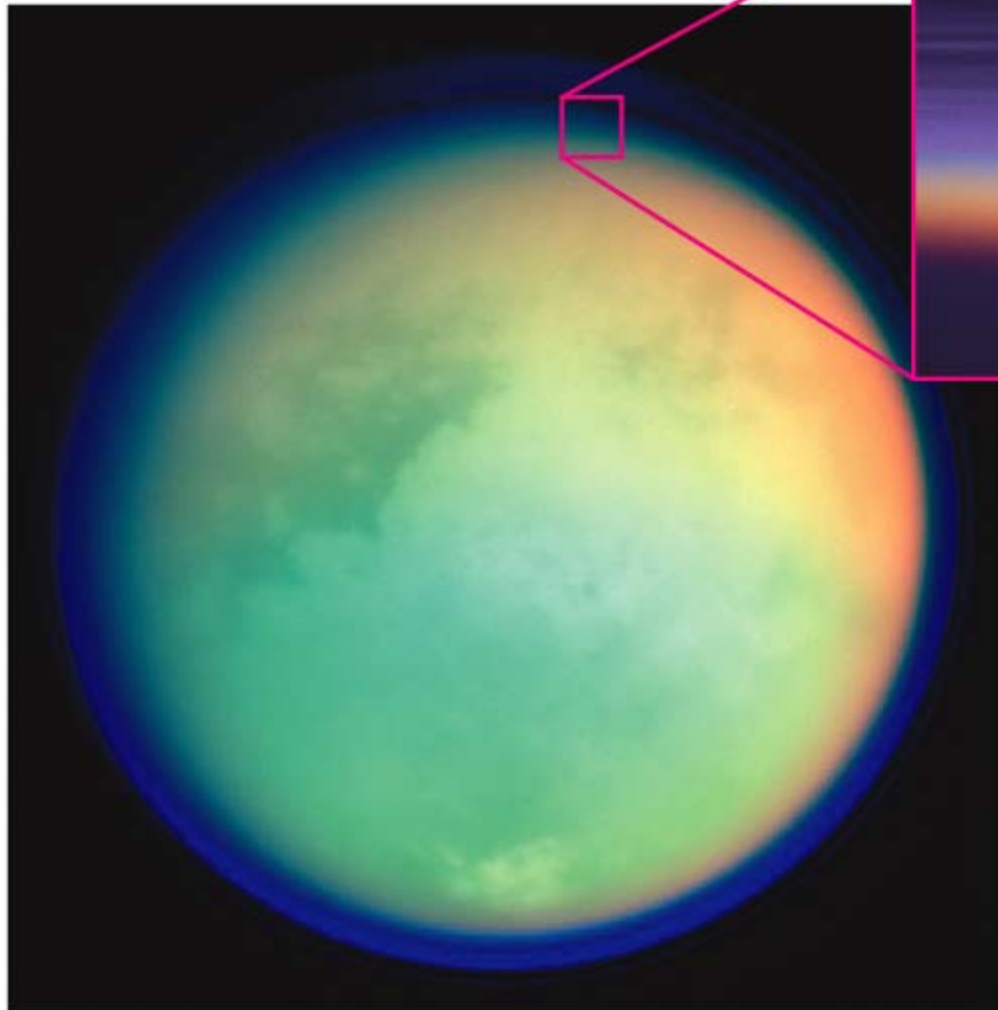
Io

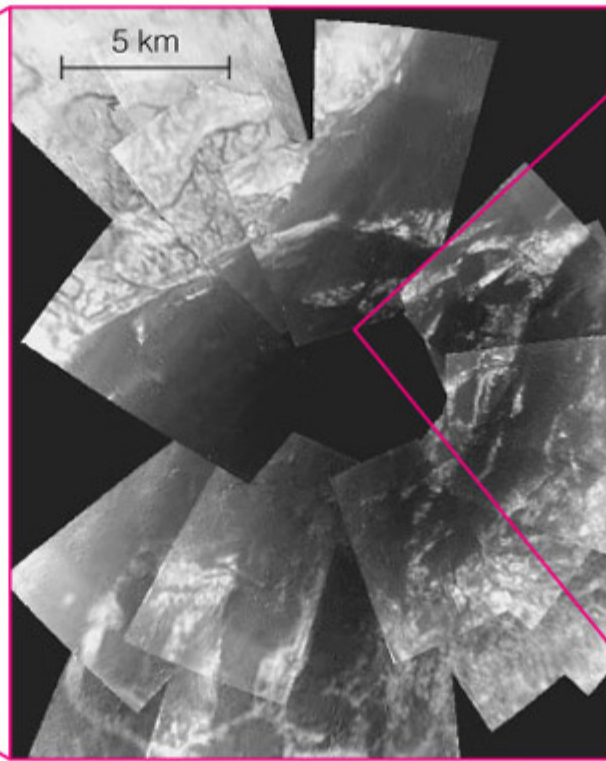
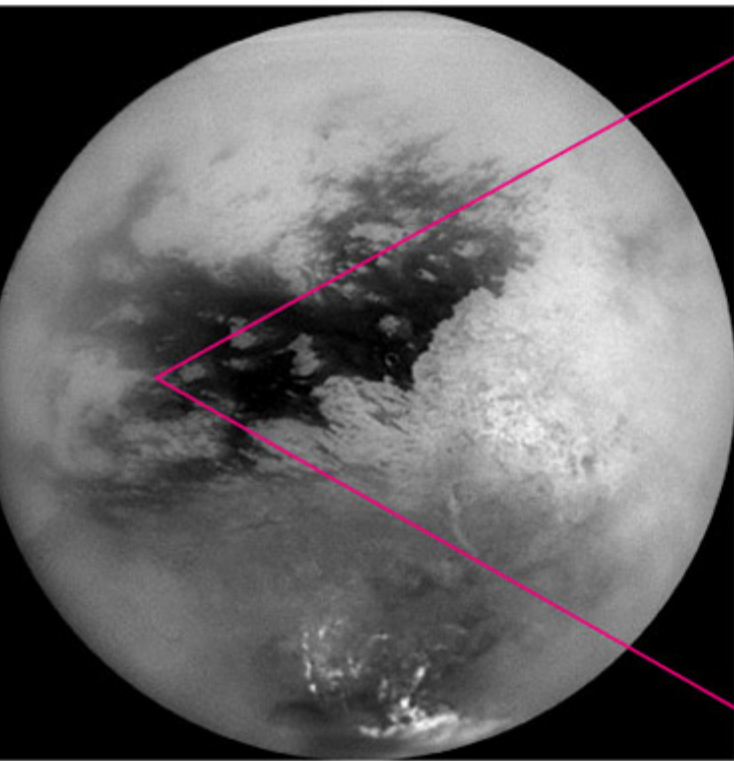
Europa

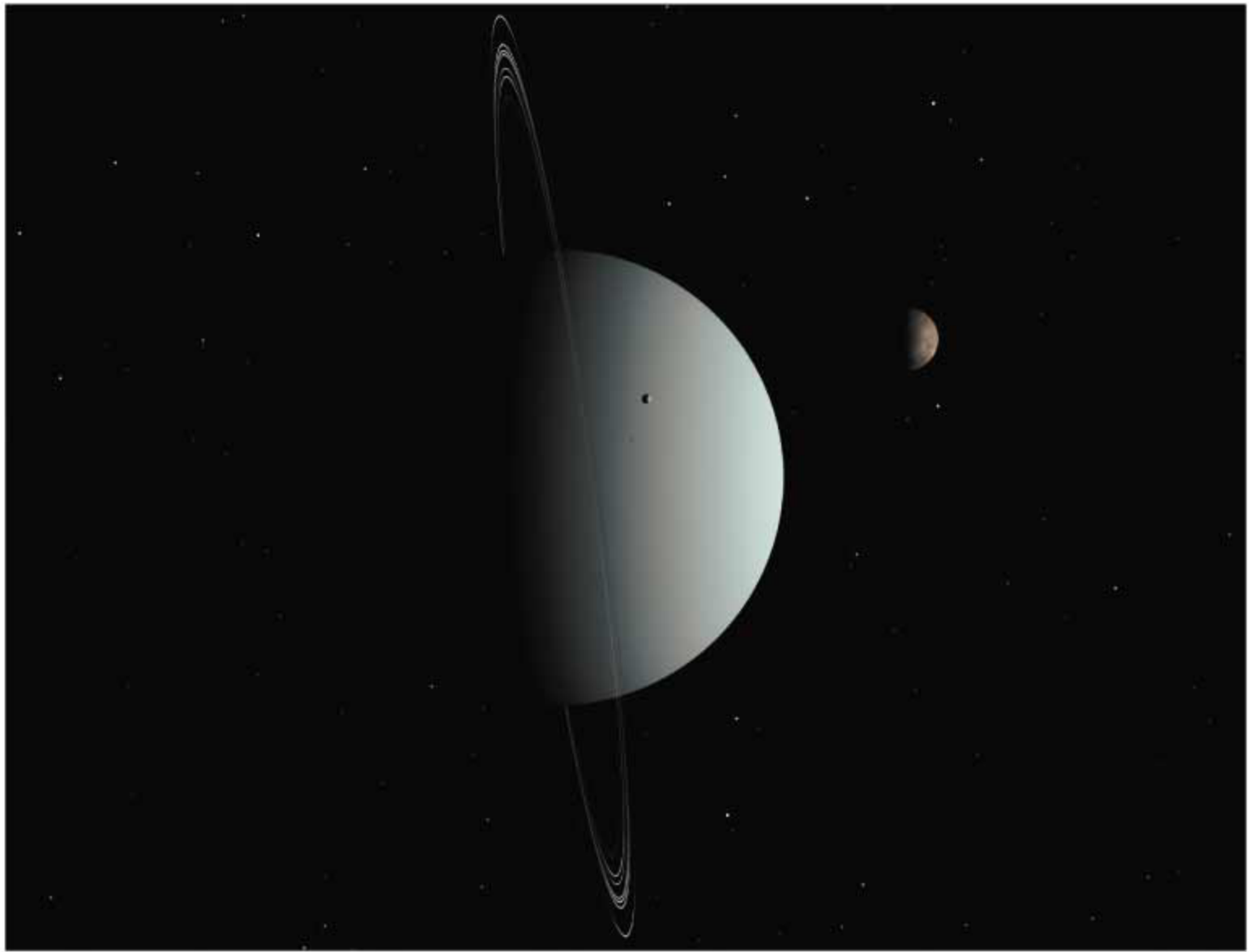
Ganymede

Callisto









© 2006 Pearson Education, Inc., publishing as Addison Wesley

